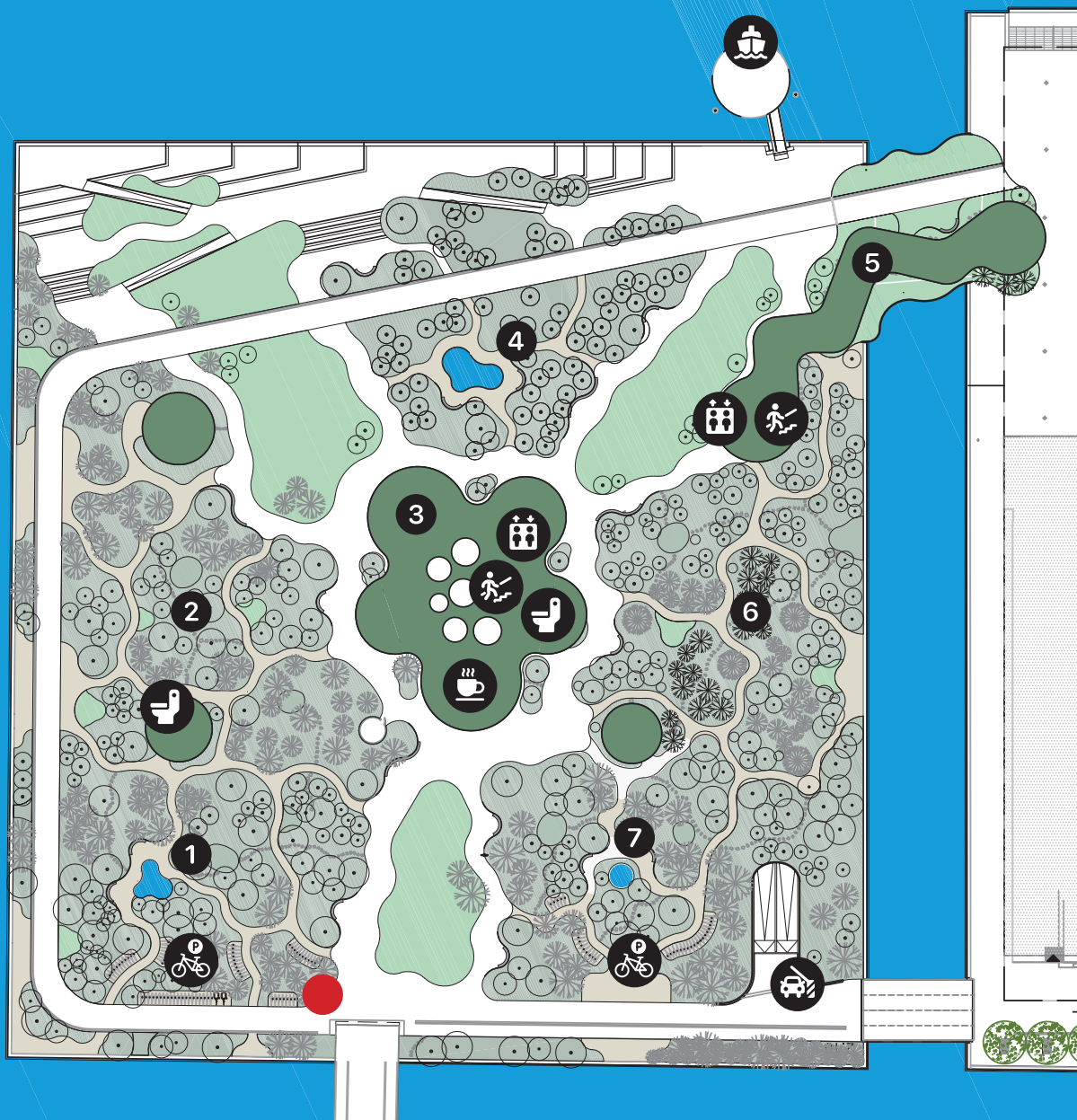


Operaparken



- Du står her
 - 1 Den Danske Egeskov og Åkandesøen
 - 2 Den Nordiske Skov
 - 3 Væksthuset
 - 4 Den Engelske Have og Springvandet
 - 5 Forbindelsesgang til Operaen
 - 6 Den Orientalske Skov
 - 7 Den Nordamerikanske Skov og Skovsøen
- ☕ Væksthusets Café
 - 🚻 Toiletter
 - 🚲 Cykelparkering
 - 🚏 Havnebus
 - 🛗 Elevator til p-anlæg
 - 👉 Trappe til p-anlæg
 - 🚶 Nedkørsel til p-anlæg

Velkommen til Operaparken Åben 07.00 til 23.00

Operaparken er en privat park med offentlig adgang.

Den grønne del af parken er opbygget med seks haverum fra forskellige steder i verden. Den Nordamerikanske Skov, Den Danske Egeskov, Den Nordiske Skov, Den Orientalske Skov, Den Engelske Have og i midten af Operaparkens Væksthus findes atriet med subtropiske planter og træer fra Middelhavsområdet. Den store artsrigdom i det grønne anlæg sikrer et skiftende, smukt farvespil hele året. De mange forskellige planter bidrager til gode vilkår for fugle og insekter.

I Væksthuset midt i parken er der café, toiletter og adgang til det underjordiske parkeringsanlæg med plads til 300 biler. De subtropiske træer i Væksthuset strækker sig fra nederste parkeringsniveau op til Væksthusets Café.

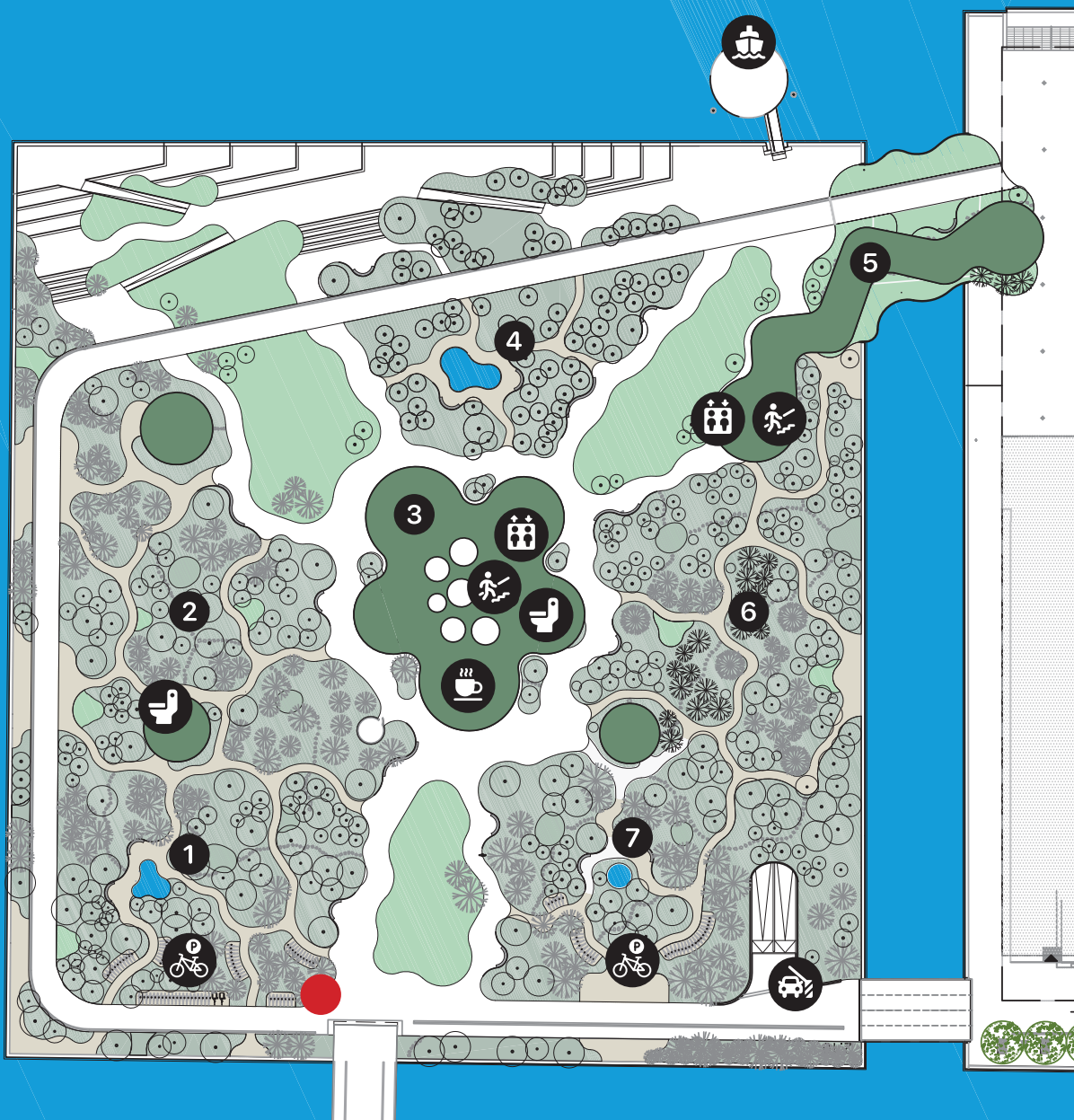
📹 Operaparken er videoovervåget.








Der henvises desuden til Ordensbekendtgørelsen på www.retsinformation.dk.
Læs mere om parken på www.operaparkfonden.dk.

Parken er opført af Operaparkfonden i 2023 ved en donation fra A.P. Møller og Hustru Chastine Mc-Kinney Møllers Fond til almene Formaal.

Hjælp med at passe på Operaparken

- 🐕 Din hund er velkommen i snor. Tak for at samle op efter den.
- 🗑️ Hjælp med at holde parken ren, brug affaldskurvene.
- 🌸 Tak for ikke at plukke, afskære eller brække grene og planter.
- 🐦 Fuglene er vant til at klare sig selv. Undlad venligst at fodre dem.
- 🚫 Der må ikke cykles, bruges el-løbehjul, rulleskøjter eller Segways i parken. Cykler skal stilles i stativerne.
- 🚫 Der må ikke tændes bål eller grilles i parken.
- 📻 Tag hensyn til andre parkgæster. Der må ikke spilles forstærket musik.
- 🚫 Der må ikke bades fra kajkanten.
- 🚫 Det er forbudt for motordrevne fartøjer at lægge til ved Operaparken.
- 🚫 Der må ikke overnattes i parken.
- 🚫 Salg af varer er ikke tilladt uden tilladelse fra Operaparken.
- ⚠️ Parken glatførebekæmpes ikke.



- You are here
- 1** The Danish Oak Wood and the Lily Pond
- 2** The Nordic Wood
- 3** The Greenhouse
- 4** The English Garden and the Fountain
- 5** Pathway to the Opera House
- 6** The Oriental Wood
- 7** The North American Wood and the Forest Lake
-  The Greenhouse Café
-  Toilets
-  Bicycle parking
-  Harbour Bus
-  Lift to car park
-  Stairs to car park (parking facility)
-  Ramp to car park

Welcome to the Opera Park

Opening hours: 7 am to 11 pm

The Opera Park is a private park with public access.

The park is designed with six garden spaces representing different parts of the world: The North American Wood, the Danish Oak Wood, the Nordic Wood, the Oriental Wood, the English Garden – and, in the centre of the Opera Park Greenhouse, you will find an atrium with subtropical plants and trees from the Mediterranean area. The rich variety of plant species in the gardens ensures a beautiful play of colours all year round, while the many different plants help provide good conditions for birds and insects.











In the Greenhouse at the centre of the park, you will find a café, toilets and access to the underground car park accommodating up to 300 cars. The subtropical trees in the Greenhouse stretch from the lower parking level to the Greenhouse Café.

 **The Opera Park is CCTV monitored.**

Public Order Regulation: www.retsinformation.dk.
About the park: www.operaparkfonden.dk.

The park was constructed by the Opera Park Foundation in 2023 by means of a donation from the A.P. Møller and Chastine Mc-Kinney Møller Foundation.

Care for the park

-  Please keep your dog on a leash.
-  Please keep the park clean and tidy – use the waste bins.
-  Please do not pick or cut the plants and flowers, or break branches off trees.
-  The birds can fend for themselves. Please do not feed them.
-  Bicycles, electric scooters, roller skates and Segways may not be used in the park. Bicycles must be placed in the racks.
-   Do not light a fire or a grill in the park.
-  Show consideration for the other park guests. No amplified music may be played.
-  Bathing from the quayside is prohibited.
-  Motorised vessels may not dock at the Opera Park.
-  You may not stay in the park overnight.
-  Sale of goods is not allowed without the permission of the Opera Park.
-  The Park pathways are not salted/sanded in winter.